

TECHNICAL MANUAL

ORGANIZATIONAL, DIRECT SUPPORT, AND

GENERAL SUPPORT

MAINTENANCE REPAIR PARTS AND SPECIAL

TOOLS LISTS

FOR

PROJECTOR, STILL PICTURE

PH-637E/PFP

(NSN 6730-01-014-5072)

**THIS PUBLICATION IS A COURTESY QUICK COPY
FROM THE UNITED STATES ARMY PUBLICATIONS
DISTRIBUTION CENTER, ST. LOUIS, MISSOURI,
TO MEET YOUR NEEDS WHILE WE REPLENISH OUR
REGULAR STOCK.**

HEADQUARTERS, DEPARTMENT OF THE ARMY

AUGUST 1979

TECHNICAL MANUAL }
No. 11-6730-242-24P }

HEADQUARTERS
DEPARTMENT OF THE ARMY
WASHINGTON, DC, 15 August 1979

**ORGANIZATIONAL, DIRECT SUPPORT, AND GENERAL SUPPORT
MAINTENANCE REPAIR PARTS AND SPECIAL TOOLS LISTS
FOR
PROJECTOR, STILL PICTURE PH-637E/PFP
(NSN 6730-014-5072)**

Current as of 23March 1979

REPORTING OF ERRORS

You can improve this manual by recommending improvements using DA Form 2028-2 located in the back of the manual. Simply tear out the self addressed form, fill it out as shown on the sample, fold it where shown, and drop it in the mail

If there are no blank DA Form 2028-2 in the back of your manual, use the standard DA Form 2028 (Recommended Changes to Publications and Blank Forms) and forward to the Commander, US Army Communications and Electronics Materiel Readiness Command, ATTN: DRSEL-ME-MQ, Fort Monmouth, NJ 07703.

In either case a reply will be furnished direct to you.

Table of Contents

	Page	Illus Figure
SECTION I. Introduction	1	
II. Repair Parts List	5	
GROUP 00 Projector. Still Picture PH-637E/PFP	5	1
Bracket Assembly	9	2
Head Assembly.....	11	3
Head Support Assembly	13	4
Cover Assembly.....	15	5
Acetate Spool 100 ft.....	17	6
Cable Assembly.....	19	7
SECTION III Special Tools List (Not applicable)		
IV. National Stock Number and Part Number		
Index.....	20	

*This manual supersedes TM 11-730-242-24P, 2 September 1978

SECTION I

INTRODUCTION

1. Scope

This manual lists spares and repair parts; special tools; special test, measurement, and diagnostic equipment (TMDE), and other special support equipment required for performance of organizational, direct support, and general support maintenance of the PH-637EIPFP. It authorizes the requisitioning and issue of spares and repair parts as indicated by the source and maintenance codes.

2. General

This repair Parts and Special Tools List is divided into the following sections:

a. Section II. Repair Parts List. A list of spares and repair parts authorized for use in the performance of maintenance. The list also includes parts which must be removed for replacement of the authorized parts. Parts lists are composed of functional groups in numeric sequence, with the parts in each group listed in figure and item number sequence.

b. Section III. Special Tools List. Not applicable.

c. Section IV. National Stock Number and Part Number Index. A list, in National item identification number (NIIN) sequence, of all National stock numbers (NSN) appearing in the listings, followed by a list, in alphameric sequence, of all part numbers appearing in the listings. National stock numbers and part numbers are cross-referenced to each illustration figure and item number appearance.

3. Explanation of Columns

a. Illustration This column is divided as follows:

(1) Figure number. Indicates the figure number of the illustration on which the item is shown.

(2) Item number. The number used to identify item called out in the illustration.

b. Source, Maintenance, and Recoverability (SMR) Codes.

(1) Source code. Source codes indicate the manner of acquiring support items for maintenance, repair, or overhaul of end items. Source codes are entered in the first and second positions of the Uniform SMR Code format as follows:

Code	Definition
PA-Item	procured and stocked for anticipated or known usage.
MD-Item	to be manufactured or fabricated at the depot maintenance level.
AF-Item	to be assembled at direct support maintenance level
XA-Item	is not procured or stocked because the requirements for the item will result in the replacement of the next higher assembly.
XD-A	support item that is not stocked. When required, item will be procured through normal supply channels.

NOTE

Cannibalization or salvage may be used as a source of supply for any items source coded above except those coded XA and aircraft support items as restricted by AR 700-42.

(2) Maintenance code. Maintenance codes are assigned to indicate the levels of maintenance authorized to USE and REPAIR support items. The maintenance codes are entered in the third and fourth positions of the Uniform SMR Code format as follows:

(a) The maintenance code entered in the third position will indicate the lowest maintenance level authorized to remove, replace, and use the support item. The maintenance code entered in the third position will indicate one of the following levels of maintenance:

Code	Application/Explanation
O-Support	item is removed, replaced, used at the organizational level.
F-Support	item is removed, replaced, used at the direct support level.

(b) The maintenance code entered in the fourth position indicates whether the item is to be repaired and identifies the lowest maintenance level with the capability to perform complete repair (i.e., all authorized maintenance functions). This position will contain one of the following maintenance codes:

Code	Application/Explanation
F-The	lowest maintenance level capable of complete repair of the support item is the direct support level.
Z-Nonreparable.	No repair is authorized

(3) Recoverability code. Recoverability codes are assigned to support items to indicate the disposition action on unserviceable items. The recoverability code is entered in the fifth position of the Uniform SMR Code format as follows:

Recoverability

Codes	Definition
Z-Nonreparable item.	When unserviceable, condemn and dispose at the level indicated in position 3.
F--Reparable item.	When uneconomically reparable, condemn and dispose at the direct support level.
c National Stock Number.	Indicates the National stock number assigned to the item and will be used for requisitioning purposes.
d Part Number.	Indicates the primary number used by the manufacturer (individual company, firm, corporation, or Government activity), which controls the design and characteristics of the item by means of its engineering drawings, specifications, standards, and inspection requirements to identify an item or range of items.

NOTE

When a stock numbered item is requisitioned, the repair part received may have a different part number than the part being replaced.

e. Federal Supply Code for Manufacturer (FSCM). The FSCM is a 5-digit numeric code listed in SB 708-42 which is used to identify the manufacturer, distributor, or Government agency, etc.

f. Description Indicates the Federal item name and, if required, a minimum description to identify the item.

g. Unit of Measure (U/M). Indicates the standard of the basic quantity of the listed item as used in performing the actual maintenance function. This measure is expressed by a two-character alphabetical abbreviation (e.g., ea, in, pr, etc). When the unit of measure differs from the unit of issue, the lowest unit of issue that will satisfy the required units of measure will be requisitioned.

h. Quantity Incorporated in Unit. Indicates the quantity of the item used in the breakout shown on the illustration figure, which is prepared for a functional group, subfunctional group, or an assembly.

4. Special Information

a Detailed manufacturing instructions for items source coded to be manufactured or fabricated are found in TM 11-6730-242-34. Bulk materials required to manufacture items are listed in the Bulk Material Group of this manual.

b. Detailed assembly instructions for items source coded to be assembled are found in TM 11-6730-242-34. Assembly components are listed immediately following the item to be assembled.

c The following publications pertain to the PH-637E/PFP and its components:
 TM 11-6730-242-12, Projector, Still Picture PH-637EIPFP
 TM 11-6730-242-34, Projector, Still Picture PH-637EIPFP.

5. How to Locate Repair Parts

a. When National stock number or part number is unknown.

(1) First. Using the table of contents, determine the functional group within which the item belongs. This is necessary since illustrations are prepared for functional groups and listings are divided into the same groups.

(2) Second Find the illustration covering the functional group to which the item belongs.

(3) Third Identify the item on the illustration and note the illustration figure and item number of the item.

(4) Fourth. Using the Repair Parts Listing, find the figure and item number noted on the illustration.

b. When National stock number or part number is known.

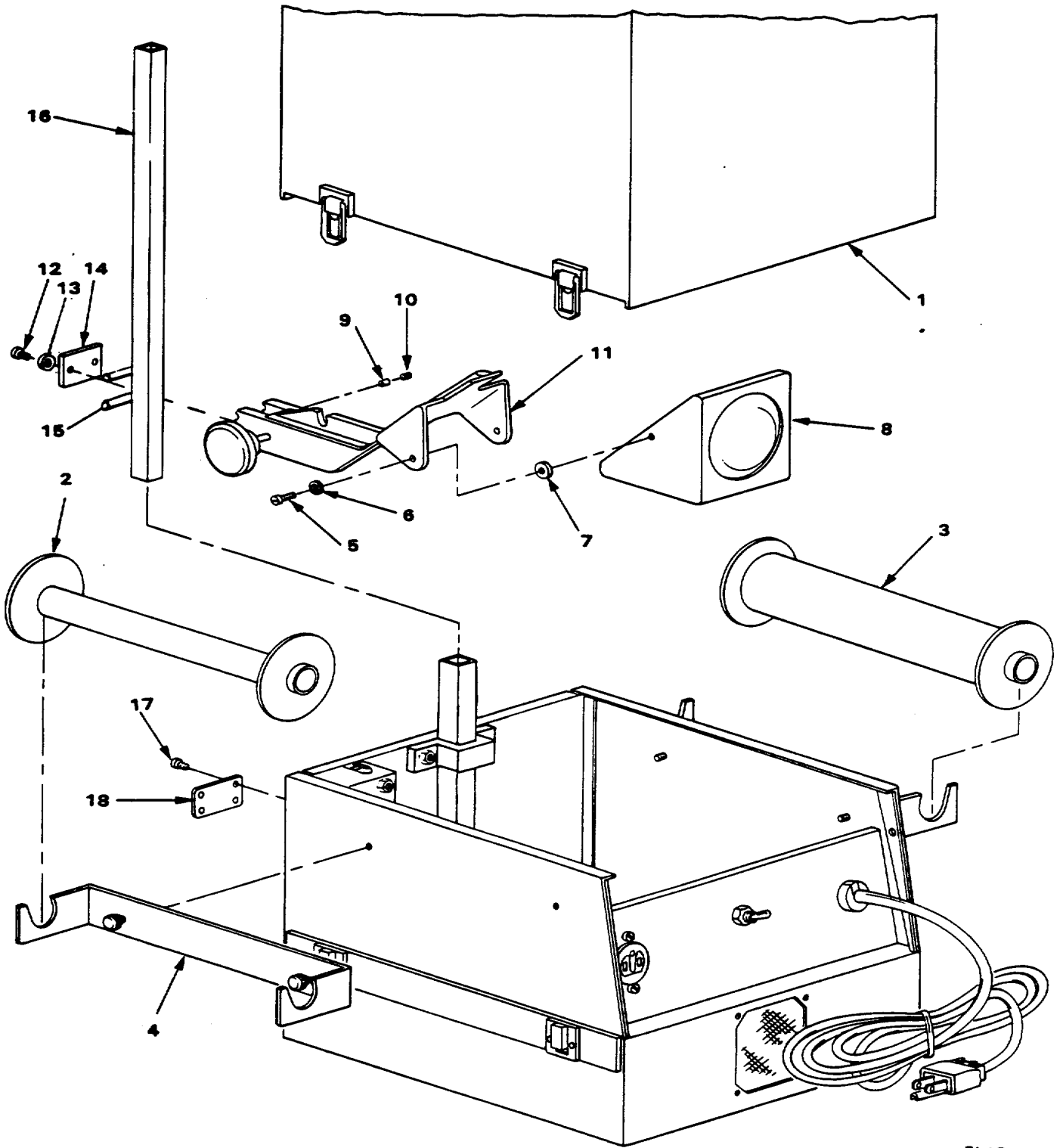
(1) First. Using the Index of National Stock Numbers and Part Numbers, find the pertinent National stock number or part number.

(2) Second After finding the figure and item number, locate the figure and item number in the repair parts list.

6. Abbreviations

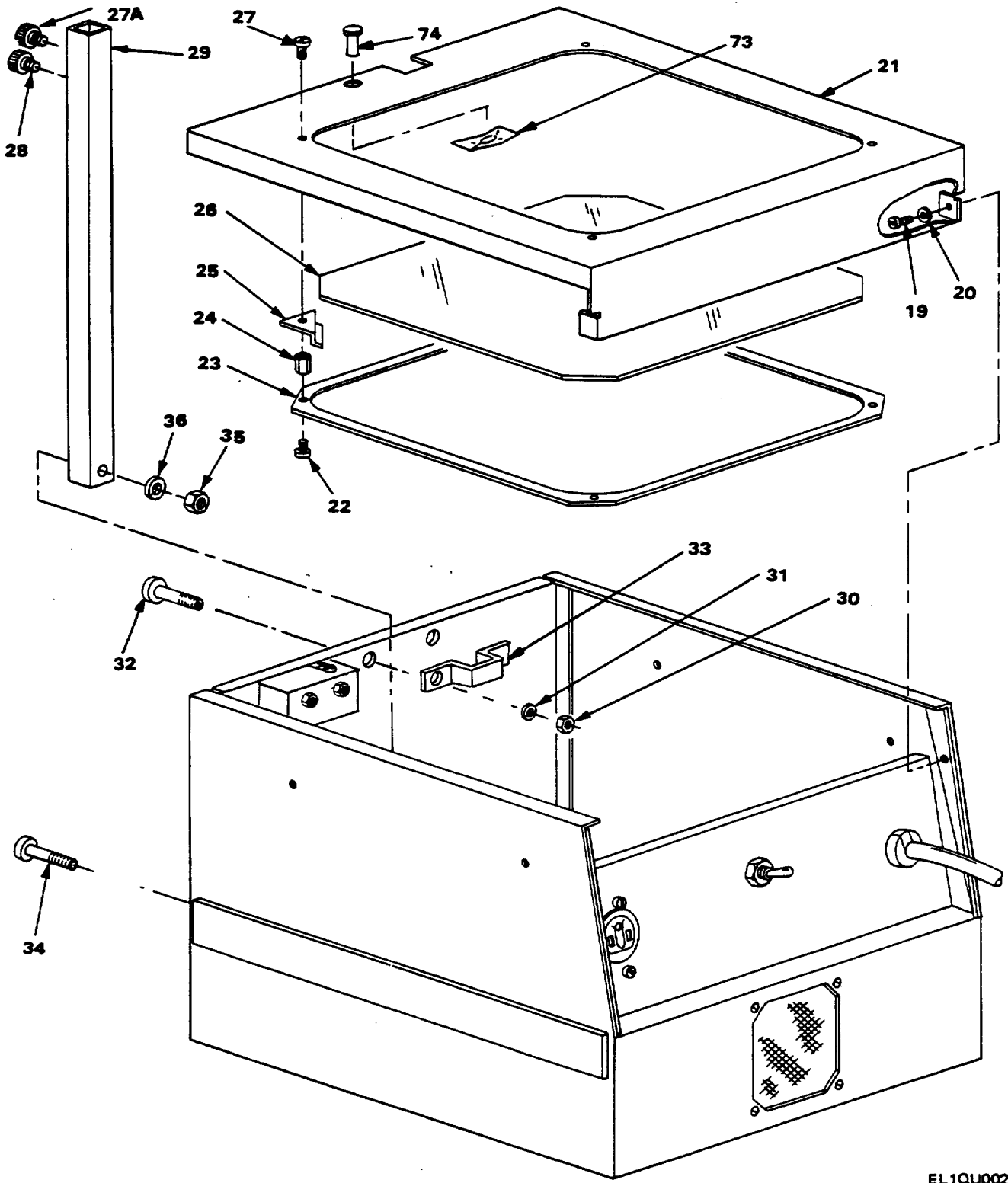
Not applicable.

(Next printed page is 4)



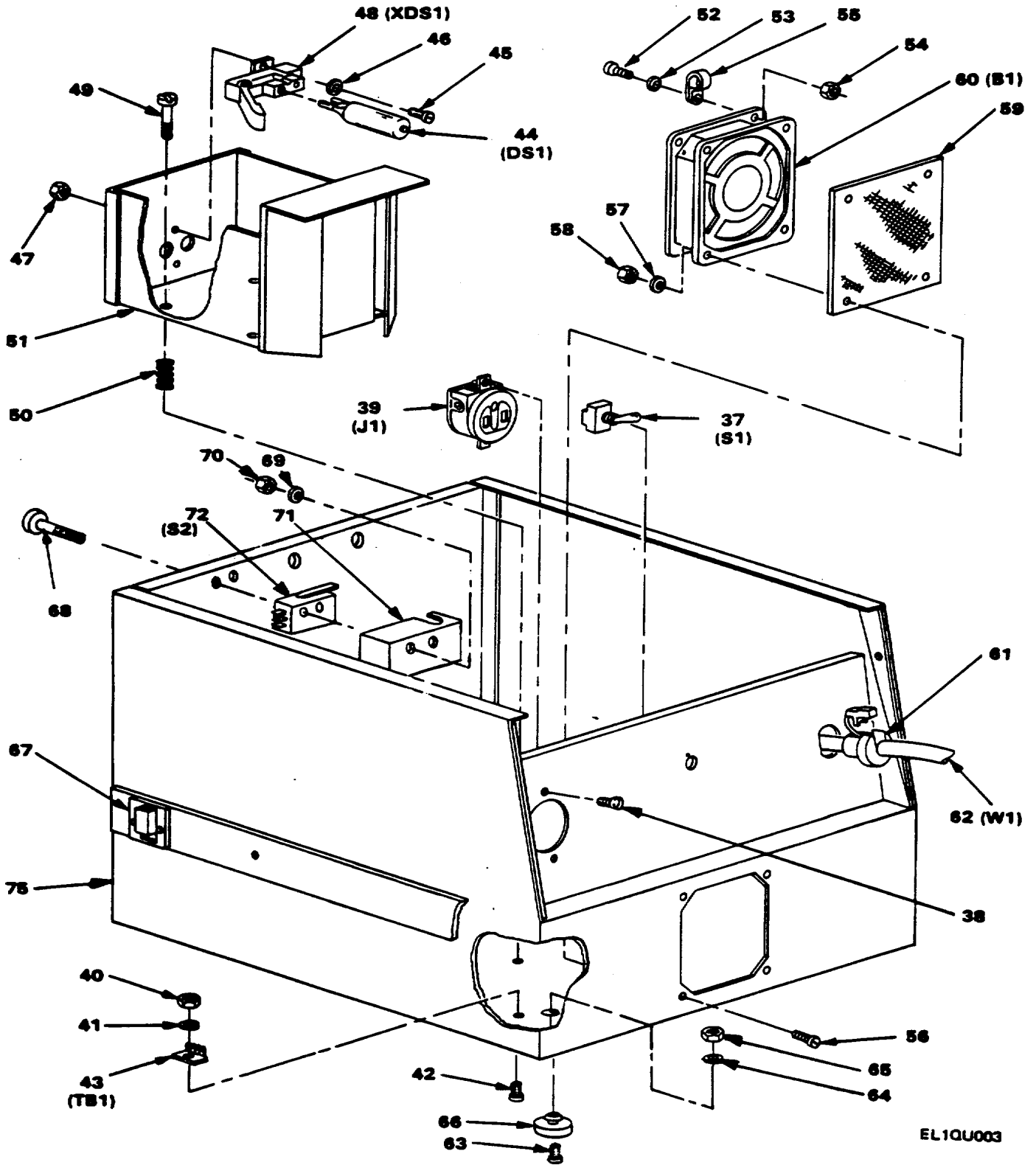
EL1QU001

Figure 1. Projector, Still Picture PH-637E/PFP
(Sheet 1 of 3)



EL10U002

Figure 1. Projector, Still Picture PH-637E/P/P
(Sheet 2 of 3)
4.1



EL1QU003

Figure 1. Projector Still Picture PH-637E/PFP
(Sheet 3 of 3)

SECTION II

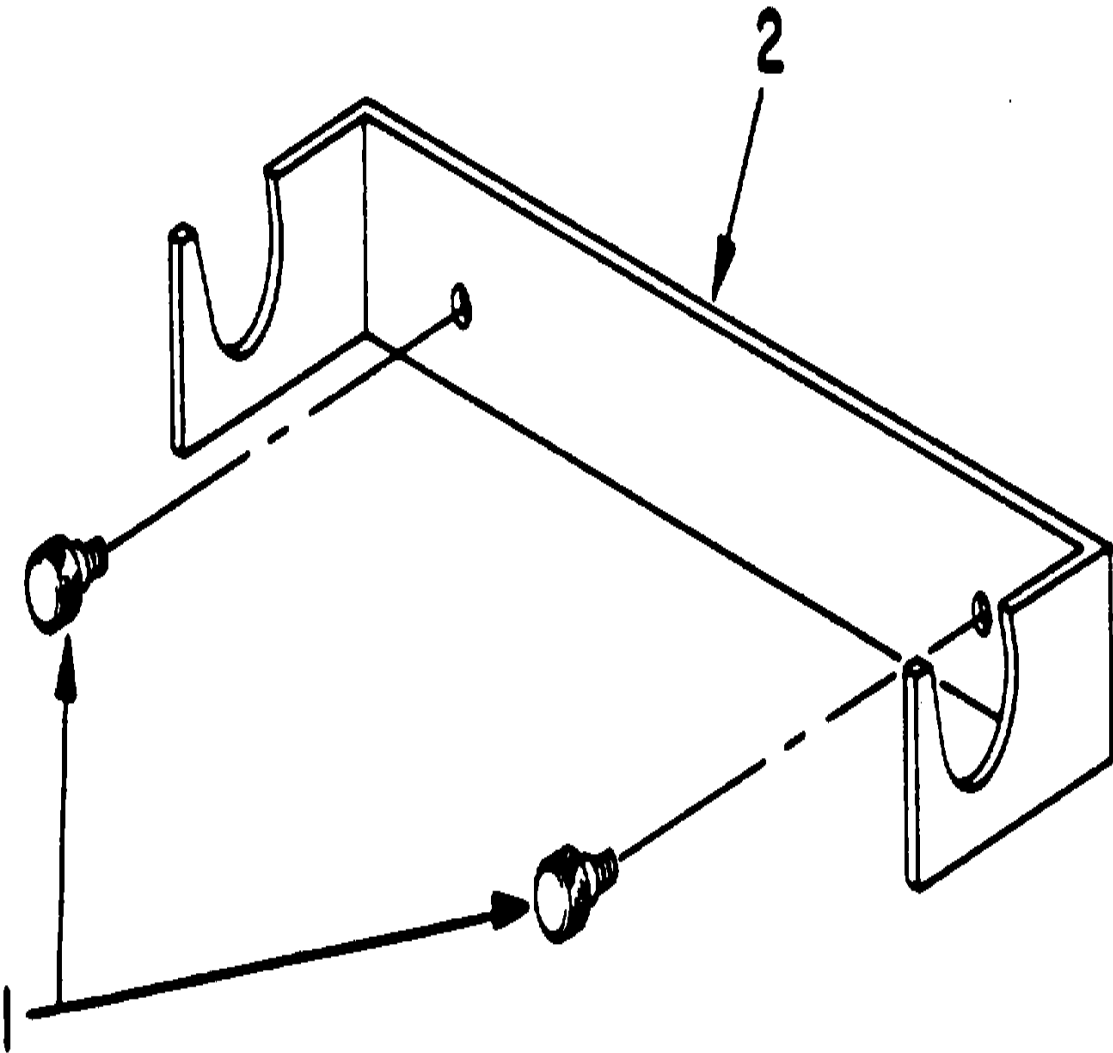
TM 5-3740-206-24P

(1) ILLUSTRATION		(2)	(3)	(4)	(5)	(6) DESCRIPTION	(7)	(8)
(a) FIG NO.	(b) ITEM NO.	SMR CODE	NATIONAL STOCK NUMBER	PART NUMBER	FSCM	USABLE ON CODE	U/M	QTY INC IN UNIT
						GROUP 00 PROJECTOR STILL PICTURE PH-6375/PFP		
1	1	XDFZZ		636-2001	52606	COVER ASSY	EA	1
1	2	XDOZZ		636-2011	52606	REEL,FILM	EA	1
1	3	PAOZZ	6760-01-032-6162	636-2016	52606	SPOOL,ACETATE 100FT	EA	1
1	4	XOOZZ		636-2051	52606	BRCKET ASSEMBLY	EA	2
1	5	PAFZZ	5305-00-579-5025	MS35224-64	96906	SCREW, MACHINE	EA	2
1	6	PAFZZ	5310-01-017-3032	636-2027	52606	WASHER,SPRING	EA	1
1	7	PAFZZ	5310-01-023-2461	636-2028	52606	WASHER,FRICTION	EA	2
1	8	XDFFF		636-2000	52606	HEAD ASSY	EA	1
1	9	PAFZZ	6730-01-032-8163	636-2034	52606	BEARIN	EA	2
1	10	PAFZZ	5305-00-253-4762	MS51018-49	96906	SETSCREW	EA	2
1	11	XDFZZ		636-2015	52606	SUPPORT ASSEMBL	EA	1
1	12	PAFZZ	5305-00-984-4988	MS35206-228	96906	SCREW, MACHINE	EA	6
1	13	PAFZZ	5310-00-045-4007	MS35338-41	96906	WASHER,LOCK	EA	10
1	14	XDFZZ		636-2013	52606	PLATE, BEARING	EA	1
1	15	PAFZZ	3110-01-017-3035	636-2032	52606	BEARING,SLIDE	EA	2
1	16	XDFZZ		636-2005-1	52606	POST,SUPPORT.....	EA	1
1	17	PAFZZ	5305-00-957-6515	MS24641-3	96906	SCREW,TAPPING	EA	4
1	18	MDFZZ		636-2025	52606	PLATE	EA	1
1	19	PAFZZ	5305-00-984-6193	MS35206-245	96906	SCREW,MACHINE	EA	2
1	20	PAFZZ	5310-00-045-3299	MS35337-42	96906	WASHER,LOCK	EA	8
1	21	XDFZZ		636-2003	52606	FRAME,PROJECTION	EA	1
1	22	PAFZZ	5305-00-984-4988	MS35206-228	96906	SCREW,MACHINE	EA	4
1	23	PAFZZ	6730-01-028-8334	636-2019	52606	LENS,FRENSEL.....	EA	1
1	24	PAFZZ	5310-01-022-9248	636-2035	52606	SPACER,SLEEVE	EA	4
1	25	PAFZZ	6730-01-020-4117	636-2037	52606	CLIP,GLASS.....	EA	4
1	26	PAFZZ	5620-01-017-6413	636-2004	52606	GLASS,SHEET.....	EA	1
1	27	PAFZZ	5305-00-889-3000	MS35206-230	96906	SCREW,MACHINE	EA	6
1	27A	XDFZZ		636-2061	52606	THUMBSCREW	EA	1
1	28	PAFZZ	5305-01-022-9252	636-2043	52606	THUMBSCREW	EA	1
1	29	XDFZZ		636-2005-2	52606	POST,SUPPORT.....	EA	1
1	30	PAFZZ	5310-00-934-9757	MS35649-202	96906	NUT,PLAIN HEX.....	EA	6
1	31	PAFZZ	5310-00-045-3299	MS35337-42	96906	WAHER,LOCK	EA	2
1	32	PAFZZ	5305-00-984-6193	MS35206-245	96906	SCREW, MACHINE	EA	6
1	33	XDFZZ		636-2018	52606	PLATE,POST	EA	1
1	34	PAFZZ	5305-00-660-2869	MS35234-68	96906	SCREW,MACHINE	EA	1
1	35	PAFZZ	5310-00-934-9751	MS35650-302	96906	NUT,PLAIN,HEX.....	EA	1
1	36	PAFZZ	5310-00-045-3296	MS35338-43	96906	WASHER,LOCK	EA	1
1	37	XDFZZ		6362052	52606	SWITCH,TOGGLE	EA	1
					5			

SECTION II

TM 5-3740-206-24P

(1) ILLUSTRATION		(2)	(3)	(4)	(5)	(6) DESCRIPTION	(7)	(8)
(a) FIG NO.	(b) ITEM NO.	SMR CODE	NATIONAL STOCK NUMBER	PART NUMBER	FSCM	USABLE ON CODE	U/M	QTY INC IN UNIT
1	38	PAFZZ	5305-00-984-6193	MS35206-245	96906	SCREW, MACHINE.....	EA	2
1	39	PAFZZ	5935-00-901-7397	5284	71183	COMM,ACPT ELEC.....	EA	1
1	40	PAFZZ	5310-00-934-9747	MS35649-262	96906	NUT,PLAIN HEX.....	EA	8
1	41	PAFZZ	5310-00-045-4007	MS35338-41	96906	WASHER,LOCK.....	EA	2
1	42	PAFZZ	5305-00-889-3000	MS35206-230	96906	SCREW,MACHINE.....	EA	1
1	43	PAFZZ	5940-00-672-0344	53F	71785	TERMINAL,BOARD.....	EA	1
1	44	PAFZZ	6240-00-003-3324	8VE	58854	LAMP,PROJECTION.....	EA	1
1	45	PAFZZ	5305-00-889-2997	MS35206-215	96906	SCREW MACHINE.....	EA	2
1	46	PAFZZ	5310-00-595-7142	MS35339-21	96906	WASHER,LOCK.....	EA	2
1	47	PAFZZ	5310-00-934-9739	MS35649-242	96906	NUT,PLAIN HEX.....	EA	2
1	48	PAFZZ	6250-01-041-4891	QCJ-6L	08807	LAMPHOLDER.....	EA	1
1	49	PAFZZ	5305-00-984-6194	MS35206-246	96906	SCREW,MACHINE.....	EA	4
1	50	PAFZZ	5360-01-022-9250	636-2039	52606	SPRING,HELICA.....	EA	4
1	51	XDFZZ		636-2006	52606	HOUSING,LAMP.....	EA	1
1	52	PAFZZ	5305-00-889-3000	MS35206-230	96906	SCREW,MACHINE.....	EA	1
1	53	PAFZZ	5310-00-045-4007	MS35338-41	96906	WASHER,LOCK.....	EA	1
1	54	PAFZZ	5310-00-934-9747	MS35649-262	96906	NUT,PLAIN,HEXAGON.....	EA	1
1	55	XDFZZ		3327	28520	CLAMP,CABLE.....	EA	1
1	56	PAFZZ	5305-00-206-6727	MS35239-37	96906	SCREW, MACHINE.....	EA	4
1	57	PAFZZ	5310-00-045-4007	MS35338-41	96906	WASHER,LOCK.....	EA	1
1	58	PAFZZ	5310-00934-9747	MS35649-262	96906	NUT,PLAIN,HEXAGON.....	EA	1
1	59	PAFZZ	6730-01-020-4115	636-2044	52606	SCREEN,PAN.....	EA	1
1	60	PAFZZ	4140-01-017-6618	636-2042	52606	FAN,COOLING.....	EA	1
1	61	PAFZZ	5975-00-965-7612	SR7P2	28520	BUSHING,STRAIN.....	EA	1
1	62	AFFFF		636-2040	52606	CABLE ASSY,PWR.....	EA	1
1	63	PAFZZ	5305-00-984-6193	MS35206-245	96906	SCREW, MACHINE.....	EA	2
1	64	PAFZZ	5310-00-045-3299	MS35337-42	96906	WASHER,LOCK.....	EA	2
1	65	PAFZZ	5310-00-934-9757	MS35649-282	96906	NUT,PLAIN,HEXAGON.....	EA	4
1	66	XDFZZ		970	05581	BUMPER,RUBBER.....	EA	1
1	67	XDFZZ		636-2024-2	52606	STRIKE,CATCH.....	EA	4
1	68	PAFZZ	5305-00-984-6221	MS35206-234	96906	SCREW,MACHINE.....	EA	2
1	69	PAFZZ	5310-00-045-4007	MS35338-41	96906	WASHER,LOCK.....	EA	1
1	70	PAFZZ	5310-00-934-9747	MS35649-262	96906	NUT,PLAIN,HEXAGON.....	EA	1
1	71	XDFZZ		636-2059	52606	SHIELD,SWITCH.....	EA	1
1	72	XDFZZ		636-2060	52606	SWITCH,INTERLOCK.....	EA	1
1	73	XDFZZ		C7809-014	78553	NUT,SHEETMETAL.....	EA	1
1	74	XDFZZ		TJ216-1	57771	NUT,PUSH ON.....	EA	1
1	75	XDFZZ		636-2002	52606	HOUSING.....	EA	1
						6/(7 BLANK)		



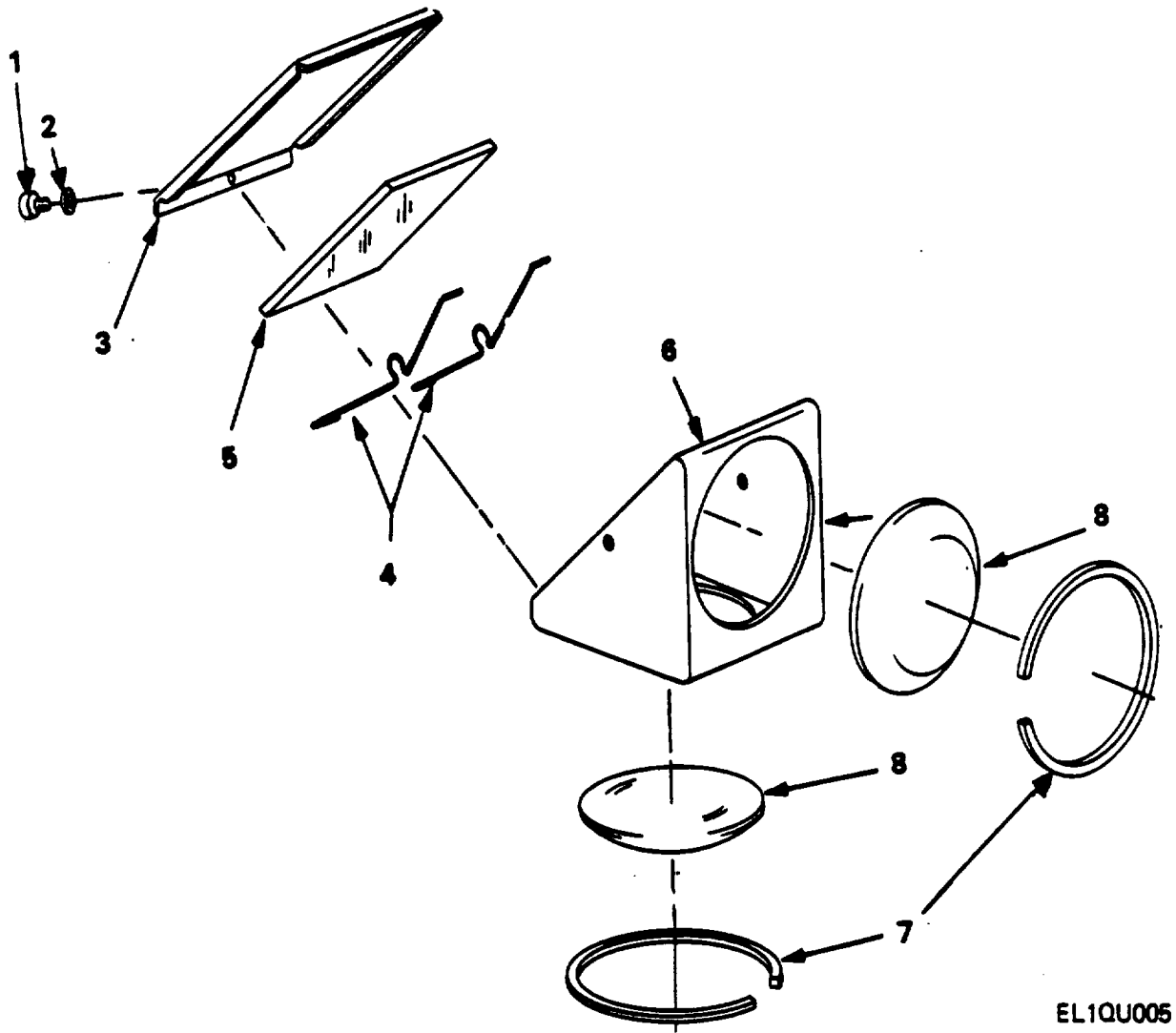
EL1QU004

Figure 2. Projector, Still Picture PH-637E/PFP, Bracket Assembly.

SECTION II

TM 5-3740-206-24P

(1) ILLUSTRATION		(2)	(3)	(4)	(5)	(6)	(7)	(8)
(a) FIG NO.	(b) ITEM NO.	SMR CODE	NATIONAL STOCK NUMBER	PART NUMBER	FSCM	DESCRIPTION USABLE ON CODE	U/M	QTY INC IN UNIT
2	1	XOOZZ		636-2045	52606	SCREW,CAPTIVE	EA	2
2	2	XOOZZ		636-2012	52606	BRACKET.....	EA	1
						9		



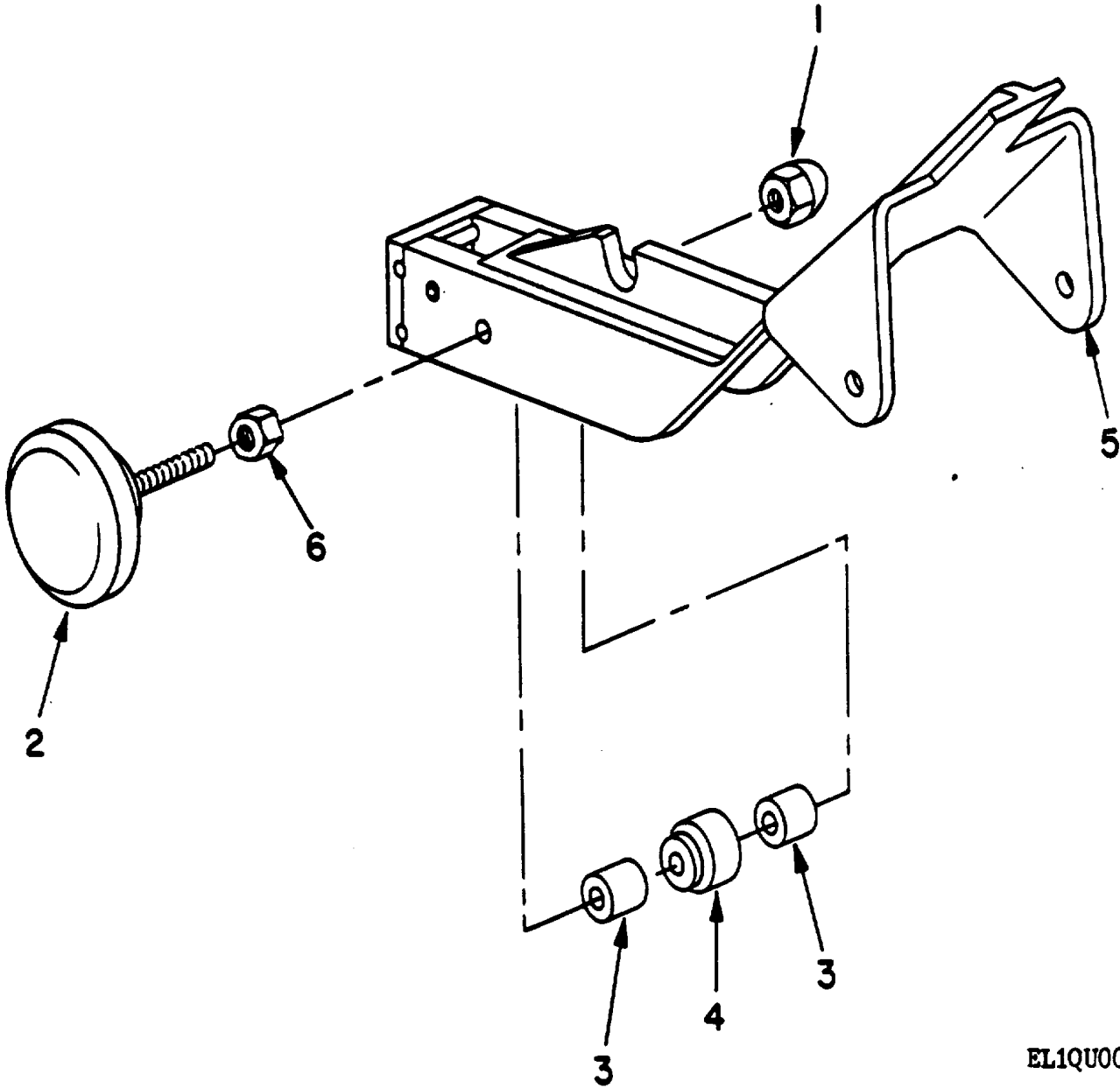
EL1QU005

Figure 3. Projector, Still Picture PH-637E/PFP, Head Assembly

SECTION II

TM 5-3740-206-24P

(1) ILLUSTRATION		(2)	(3)	(4)	(5)	(6) DESCRIPTION	(7)	(8)
(a) FIG NO.	(b) ITEM NO.	SMR CODE	NATIONAL STOCK NUMBER	PART NUMBER	FSCM	USABLE ON CODE	U/M	QTY INC IN UNIT
3	1	PAFZZ	5305-00-984-4982	MS35206-225	96906	SCREW,MACHINE.....	EA	1
3	2	PAFZZ	5310-00-045-4007	MS35338-41	96906	WASHER,LOCK.....	EA	1
3	3	XDFZZ		636-2009	52606	COVER,HEAD.....	EA	1
3	4	PAFZZ	6730-01-035-4480	636-2026	52606	RETAINER,MIRROR.....	EA	2
3	5	PAFZZ	6720-01-020-4180	636-2017	52606	MIRROR.....	EA	1
3	6	XDFZZ		636-2008	52606	HEAD,PROTECTION.....	EA	1
3	7	XDFZZ		636-2046	52606	RETAINER,LENS.....	EA	2
3	8	PAFZZ	6760-01-030-0994	636-2020	52606	LENS.....	EA	2
11								



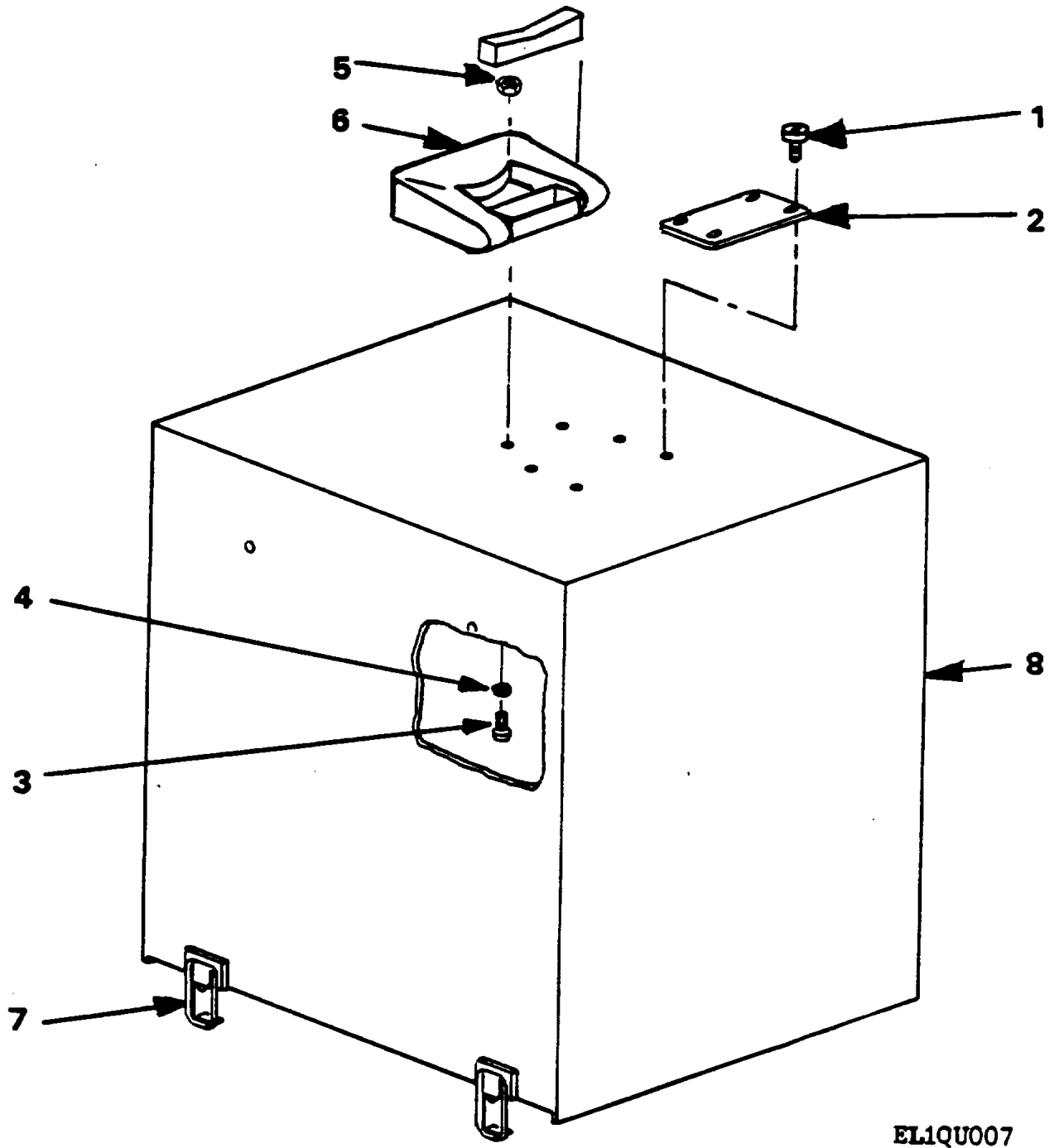
EL1QU006

Figure 4. Projector, Still Picture PH-637EPFP, Acetate Spool 100 ft.

SECTION II

TM 5-3740-206-24P

(1) ILLUSTRATION		(2)	(3)	(4)	(5)	(6) DESCRIPTION	(7)	(8)
(a) FIG NO.	(b) ITEM NO.	SMR CODE	NATIONAL STOCK NUMBER	PART NUMBER	FSCM	USABLE ON CODE	U/M	QTY INC IN UNIT
4	1	XDFZZ		ACS168NOE	77122	NUT,CAP.....	EA	1
4	2	XDFZZ		636-2014	52606	SHAFT,FOCUS	EA	1
4	3	PAFZZ	5365-01-017-3134	636-2054	52606	PUCK,SPACER.....	EA	2
4	4	PAFZZ	6730-01-020-4116	636-2030	52606	PUCK,FOCUS	EA	1
4	5	XDFZZ		636-2007	52606	SUPPORT,HEAD	EA	1
4	6	PAFZZ	5310-00-829-9981	MS35649-2312	96906	NUT,PLAIN HEX.....	EA	1
						13		



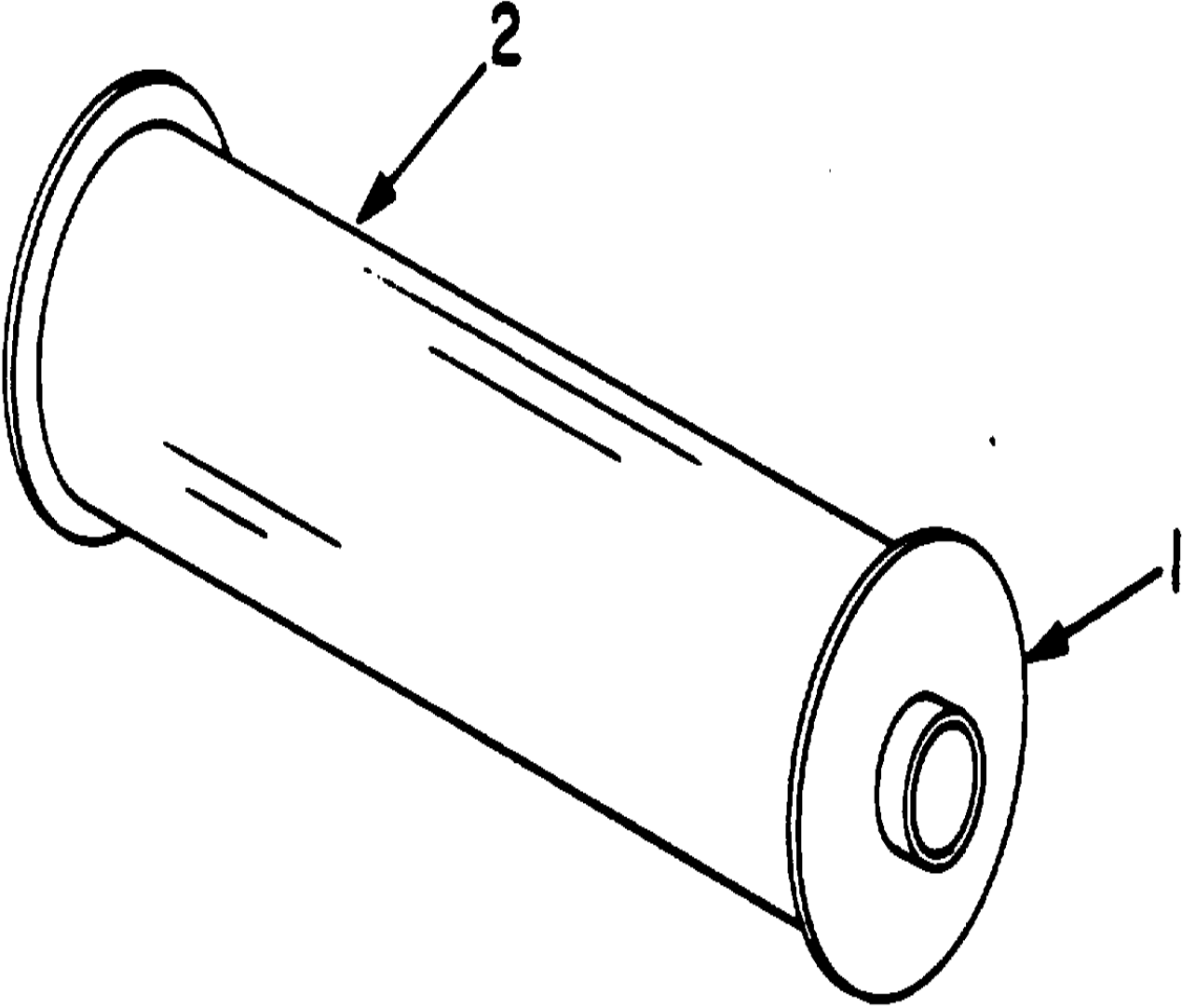
EL1QU007

Figure 5. Projector, Still Picture PH-637E/PFP, Cover Assembly

SECTION II

TM 5-3740-206-24P

(1) ILLUSTRATION		(2)	(3)	(4)	(5)	(6) DESCRIPTION	(7)	(8)
(a) FIG NO.	(b) ITEM NO.	SMR CODE	NATIONAL STOCK NUMBER	PART NUMBER	FSCM	USABLE ON CODE	U/M	QTY INC IN UNIT
5	1	PAFZZ	5305-00-937-6513	MS24641-3	96906	SCREW,TAPPING	EA	4
5	2	NDFZZ		636-2025	52606	FLAT.....	EA	1
5	3	PAFZZ	5305-00-984-6193	MS35206-245	96906	SCREW,MACHINE.....	EA	4
5	4	PAFZZ	5310-00-045-3299	MS35337-42	96906	WASHER,LOCK	EA	2
5	5	PAFZZ	5310-00-934-9757	MS35649-262	96906	NUT,PLAIN HEX.....	EA	2
5	6	XDFZZ		636-2021	52606	HANDLE,COVER	EA	1
5	7	XDFZZ		636-2024-1	52606	CATCH,CLAMPING.....	EA	4
5	8	XDFZZ		636-2022	52606	COVER.....	EA	1
15								



EL1QU008

Figure 6. Projector, Still Picture PH-637E/PFP, Acetate Spool, 100ft

SECTION II

TM 5-3740-206-24P

(1) ILLUSTRATION		(2)	(3)	(4)	(5)	(6)	(7)	(8)
(a) FIG NO.	(b) ITEM NO.	SMR CODE	NATIONAL STOCK NUMBER	PART NUMBER	FSCM	DESCRIPTION USABLE ON CODE	U/M	QTY INC IN UNIT
6 6	1 2	XDOFF XAOZZ		636-2011 636-2050	52606 52606	REEL,FILM..... ROLL,ACETATE 10.....	EA RL	1 1
						17		

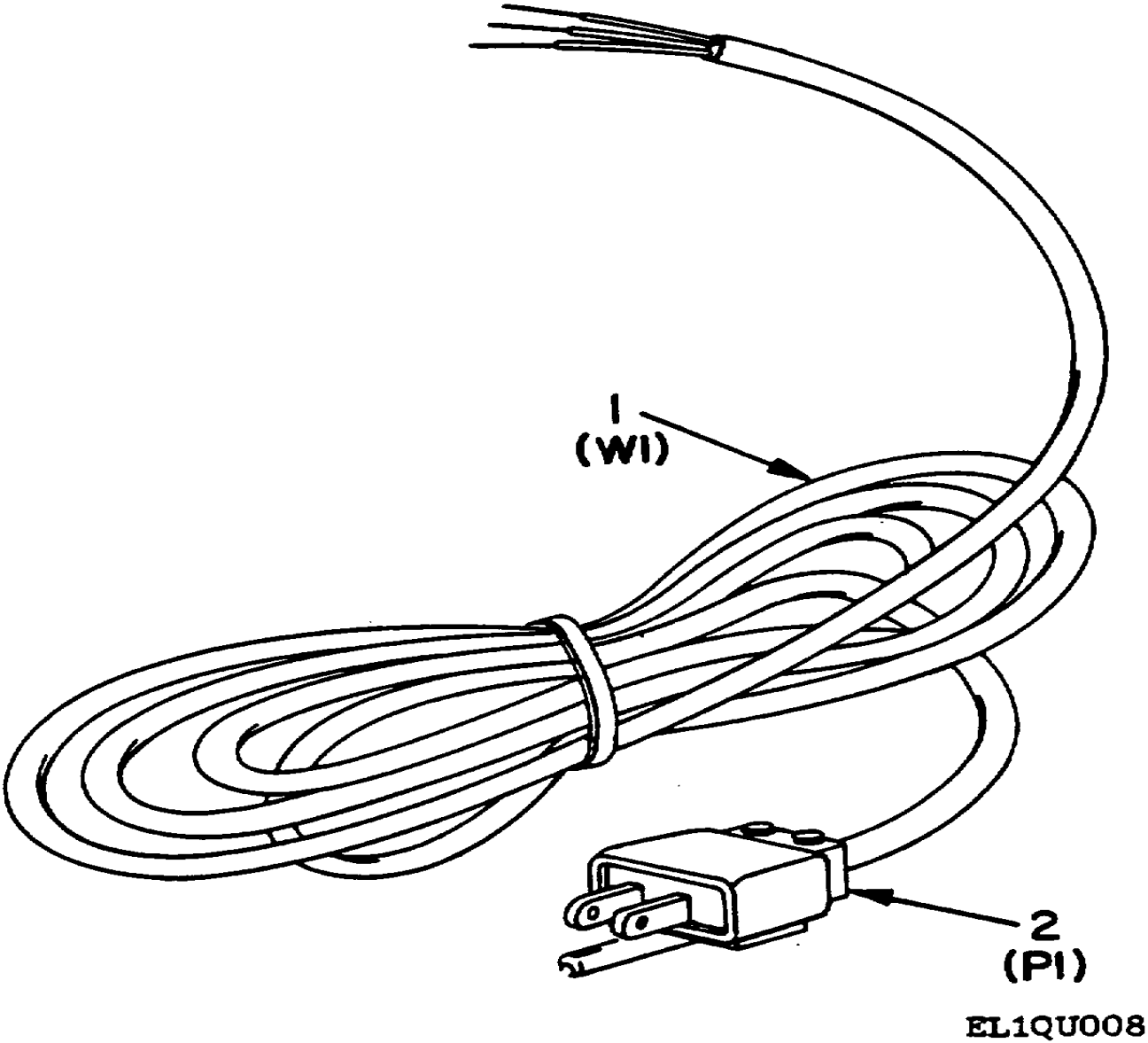


Figure 7. Projector, Still Picture PH-637E/PFP, Cable Assembly

SECTION II

TM 5-3740-206-24P

(1) ILLUSTRATION		(2)	(3)	(4)	(5)	(6) DESCRIPTION	(7)	(8)
(a) FIG NO.	(b) ITEM NO.	SMR CODE	NATIONAL STOCK NUMBER	PART NUMBER	FSCM	USABLE ON CODE	U/M	QTY INC IN UNIT
7	1	PAFZZ	6145-00-617-1376	CO-03HGF(3/16)04 35	01349	CABLE, POWER , ELE	FT	18
7	2	PAFZZ	5935-00-931-7490	UP221N	01349	CONNECTOR,PLU.....	EA	1
19								

SECTION IV

NATIONAL STOCK NUMBER AND PART NUMBER INDEX

STOCK NUMBER	FIGURE NO.	ITEM NO.	STOCK NUMBER	FIGURE NO.	ITEM NO.
6240-00-003-3324	1	44	5310-00-934-9757	5	6
5310-00-045-3296	1	36	5305-00-957-6513	1	17
5310-00-045-3299	1	20	5305-00-957-6513	5	1
5310-00-045-3299	1	31	5975-00-965-7612	1	61
5310-00-045-3299	1	64	5305-00-984-4982	3	1
5310-00-045-3299	5	4	5305-00-984-4988	1	12
5310-00-045-4001	1	13	5305-00-984-4988	1	22
5310-00-045-4007	1	41	5305-00-984-6193	1	19
5310-00-045-4007	1	53	5305-00-984-6193	1	32
5310-00-045-4007	1	57	5305-00-964-6493	1	36
5310-00-045-4007	1	69	5305-00-984-6193	1	63
5310-00-045-4007	3	2	5305-00-984-6193	5	3
5305-00-206-6727	1	56	5305-00-984-6194	1	49
5305-00-253-4762	1	10	5305-00-984-6221	1	66
5305-00-579-5025	1	5	5310-01-017-3032	1	6
5310-00-595-1142	1	46	3110-01-017-3035	1	15
6145-00-617-1376	7	1	5365-00-017-3136	4	3
5305-00-660-2689	1	34	5620-01-011-6413	3	26
5940 00-672-0344	1	43	4140-01 017-6618	1	60
5310-00-829-9981	4	6	6730-01-020-4115	1	59
5310:00-689-2997	1	45	6730-01-020-4116	4	4.
5305-00-889-3000	1	27	6730-01-020-4117	1	25
5305-00-889-3000	1	42	6720-01-020-4180	3	5
5305-00-889-3000	1	52	5310-01-022-9248	1	24
5935-00-901-1397	1	39	5360-01-022-9250	1	50
5935-00-931-7490	7	2	5305-01-022-9252	1	23
5310-00-934-9739	1	47	5310-01-023-2461	1	7
5310-00-934-9747	1	40	6730-01-028-8334	1	23
5310-00-934-9747	1	54	6760-01-030-0994	3	8
5310-00-934-9747	1	58	6760-01-032-8162	1	3
5310-00-934-9747	1	70	6730-01-032-8163	1	9
5310-00-934-9751	1	35	6730-01-035-4480	3	4
5310-00-934-9757	1	30	6250-01-041-4891	1	48
5310-00-934-9757	1	65			

PART NUMBER	FSCM	FIG NO	ITEM NO.	PART NUMBER	FSCM	FIG. NO.	ITEM NO.
AC5168NOE	77122	4	1	MS35649-282	96906	1	30
BVE	58854	1	44	MS35649-282	96906	1	65
C0-03HGF(3/16)0435	81349	7	1	MS35649-282	96906	5	5
C7809-014	78553	1	73	MS35650-302	96906	1	35
MS24641-3	96906	1	17	MS51018-49	96906	1	10
MS24641-3	96906	5	1	QCJ-6L	08807	1	48
MS35206-215	96906	1	45	SR7P2	28520	1	61
MS35206-225	96906	3	1	TJ218-1	57771	1	74
MS35206-228	96906	1	12	UP221M	81349	7	2
MS35206-228	96906	1	22	3327	28520	1	55
MS35206-230	96906	1	27	5284	71183	1	39
MS35206-230	96906	1	42	53F	71785	1	43
MS35206-230	96906	1	52	636-2000	52606	1	8
MS35206-234	96906	1	68	636-2001	52606	1	1
MS35206-245	96906	1	19	636-2002	52606	1	75
MS35206-245	96906	1	32	636-2004	52606	1	26
MS38206-245	96906	1	38	636-2005-1	52606	1	16
MS35206-245	96906	1	63	636-2005-2	52606	1	29
MS35206-245	96906	5	3	636-2006	52606	1	51
MS35206-246	96906	1	49	636-2007	52606	4	5
MS35224-64	96906	1	5	636-2006	52606	3	6
MS35234-68	96906	1	34	636-2009	52606	3	3
MS35239-37	96906	1	56	636-2011	52606	1	2
MS35337-42	96906	1	20	636-2011	52606	6	1
MS35337-42	96906	1	31	636-2012	52606	2	2
MS35337-42	96906	1	64	636-2013	52606	1	14
MS35337-42	96906	5	4	636-2014	52606	4	2
MS35338-41	96906	1	13	636-2015	52606	1	11
MS35338-41	96906	1	41	636-2016	52606	1	3
MS35338-41	96906	1	53	636-2017	52606	3	5
MS35336-41	96906	1	57	636-2018	52606	1	33
MS35338-41	96906	1	69	636-2019	52606	1	23
MS35338-41	96906	3	2	636-2020	52606	3	8
MS35338-43	96906	1	36	636-2021	52606	5	6
MS35339-21	96906	1	46	636-2022	52606	5	8
MS35649-2312	96906	4	6	636-2024-1	52606	5	7
MS35649-242	96906	1	47	636-2024-2	52606	1	67
MS35649-262	96906	1	40	636-2025	52606	1	18
MS35649-262	96906	1	54	636-2025	52606	5	2
MS35649-262	96906	1	58	636-2026	52606	3	4
MS35649-262	96906	1	70	636-2027	52606	1	6

SECTION IV

NATIONAL STOCK NUMBER AND PART NUMBER INDEX

PART NUMBER	FSCM	FIG NO.	ITEM NO.	PART NUMBER	FSCM	FIG. NO	ITEM NO
636-2028	52606	1	7	636-2045	52606	2	1
636-2030	52606	4	4	636-2046	S2606	3	7
636-2032	52606	1	15	636-2050	52606	6	2
636-2034	52606	1	9	636-2051	52606	1	4
636-2035	52606	1	24	636-2052	52606	1	37
636-2037	52606	1	25	636-2054	S2606	4	3
636-2039	52606	1	50	636-2059	S2606	1	71
o36-2040	52606	1	62	636-2060	52606	1	72
636-2042	52606	1	60	636-2061	52606	1	27A
636-2043	52b06	1	28	970	05581	1	66
636-2044	52606	1	59				
636-2003	52606	1	21				

By Order of the Secretary of the Army

E. C. MEYER
General, United States Army
Chief of Staff

Official:

J.C PENNINGTON
Major General, United States Army
The Adjutant General

DISTRIBUTION:

Active Army

USAINSCOM (2)	MAAG (1)
COE (1)	USARMIS (1)
TSG (1)	USAERDAA (1)
USAARENBD (1)	USAERDAW (1)
DARCOM (1)	HISA (Ft Monmouth) (21)
TRADOC (2)	Ft Gordon (10)
OS Maj Comd (4)	Ft Huachuca (10)
TECOM (2)	Ft. Carson (5)
USACC (4)	Ft Richardson (CERCOM Ofc) (2)
MDW (1)	Army Dep (1) except
Armies (2)	LBAD (14)
Corps (2)	SAAD (30)
Svc Colleges (1)	Toad (14)
USASIGS (5)	SHAD (3)
USAADS (2)	Ft Gillem (10)
USAFAS (2)	USA Deps (1)
USAARMS (2)	Sig Sec USA Dep (1)
USAIS (2)	Units org under fol TOE:
USAES (2)	20-207 (2)
USAICS (3)	20-610 (2)

NG: None

USAR: None

For explanation of abbreviations used, see AR 310-50.

RECOMMENDED CHANGES TO EQUIPMENT TECHNICAL PUBLICATIONS



THEN... JOT DOWN THE DOPE ABOUT IT ON THIS FORM, CAREFULLY TEAR IT OUT, FOLD IT AND DROP IT IN THE MAIL!

SOMETHING WRONG WITH THIS PUBLICATION?

FROM: (PRINT YOUR UNIT'S COMPLETE ADDRESS)

DATE SENT

PUBLICATION NUMBER

PUBLICATION DATE

PUBLICATION TITLE

BE EXACT... PIN-POINT WHERE IT IS

PAGE NO.

PARA-GRAPH

FIGURE NO.

TABLE NO.

IN THIS SPACE TELL WHAT IS WRONG AND WHAT SHOULD BE DONE ABOUT IT:

TEAR ALONG PERFORATED LINE

PRINTED NAME, GRADE OR TITLE, AND TELEPHONE NUMBER

SIGN HERE:

DA FORM 2028-2
JUL 79

PREVIOUS EDITIONS ARE OBSOLETE.

P.S.—IF YOUR OUTFIT WANTS TO KNOW ABOUT YOUR RECOMMENDATION MAKE A CARBON COPY OF THIS AND GIVE IT TO YOUR HEADQUARTERS.

